

# Aulika Top HSC

*High speed cappuccino*

*Saeco Vending & Professional*

**PHILIPS**

Saeco is a trademark of the Philips Group

# Project scope: additional features to complete the Aulika Top offer



## Aulika Top HSC: perfect fit for all professional environments

### Increased delivery speed:

- High speed milk function
- Pre-grind function
- Stand-by can be turned OFF



### Improved beverages options:

- Milk-coffee (first coffee, then milk)
- Perfect Americano (first coffee, then hot water; water % now is customizable)



### More suitable for professional environments:

- Backlighting buttons for improved visibility
- Cappuccinatore with outlet on the left or on the right (can place milk box on any side)
- Coffee cakes alarm can be turned off
- Descal program can be canceled with on/off or main switch rear button
- Stand-by can be turned OFF
- Possibility to use custom logos on the display
- Enlarged boiler pipes (reduced descale frequency)



### Payment systems compatibility:

- Decounting systems (cashless)
- Dual-price stepper coin validator (coins and tokens)



## Improved design and usability

*Backlighting buttons, cappuccinatore on left or right, possibility to use coin box*



## New milk solutions:

*High speed cappuccino and high speed latte macchiato, milk coffee*

### Cappuccino



Standard brewing time  
First milk, then coffee  
Full «3 layers» appearance

### Cappuccino High Speed



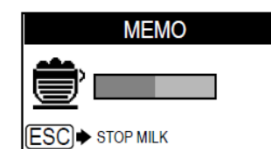
Faster brewing time  
Milk and coffee brewed simultaneously  
No 3 layers but thick milk layer

### Milk Coffee



Standard brewing time  
First coffee, then milk

*Please note: cappuccino and latte macchinato length (Memo function) can be modified ONLY when “High Speed” function is turned OFF. Please set the cappuccino length before activating the “high speed” function.*



## Increased delivery speed: High Speed Milk mode

**Beverages in Aulika Top HSC can be brewed in:**

- standard mode (first milk, then coffee)
- High speed milk mode (coffee and milk brewed at the same time)

**Brewing time for a 120cc Cappuccino (eco-mode off)\*:**

- Standard mode: 60 seconds
- High speed milk mode: 35 seconds → 25 seconds faster

**Simply activate the function for each beverage**

- Choose high speed «on» from the beverage menu
- Can be activated for each beverage (→ can have high speed cappuccino and standard latte macchiato in the same machine)

**Visual result:**

- No 3 layers when high speed mode is on
- Still present consistent milk foam layer

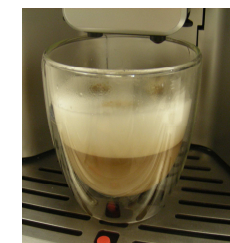
\*Average values measured in laboratory conditions. Values serve uniquely as guidelines and are subject to change and are dependent to different conditions such as recipes, ingredients, cup size, preferences settings.



CAPPUCCINO
COFFEE LENGTH
MILK QUANTITY
HIGH SPEED MILK
DEFAULT
HIGH SPEED MILK
OFF
ON



standard



High speed milk

## How can I get to the maximum delivery speed?

- **Stand-by:** when turned ON, the machine enters in sleep mode after a pre-set time (default value: 60 minutes), turning off the boilers. When a beverage is selected, the machine must heat them up again, with waiting time for the user. Turn it OFF to avoid waiting time and have the boilers always ready.
- **Eco-mode:** when turned ON, steam boiler is not heated and coffee boiler is kept under 70° C until a beverage is selected. Turn it OFF to have Aulika's boilers always ready at the right temperature. (Default value is OFF).
- **High speed milk:** when turned ON, milk and coffee are delivered at the same time.
- **Pre-grind:** when turned ON, the machine grinds coffee beans and fills the doser right after brewing a coffee. This will save grinding time in the next beverage.

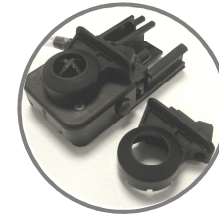
		Ecomode: on High speed milk: off Pre-grind: off	Ecomode: off High speed milk: off Pre-grind: off	Ecomode: off High speed milk: on Pre-grind: off	Ecomode: off High speed milk: on Pre-grind: on
<b>1st cappuccino (first beverage)</b>	Appr. 120cc	100 sec <i>(starts from stand-by condition)</i>	60 sec	35 sec	33 sec
<b>2nd cappuccino (second beverage)</b>	Appr. 120cc	60 sec	60 sec	35 sec	33 sec

+SPEED 

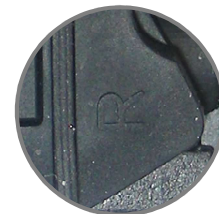
Average values measured in laboratory conditions. Values serve uniquely as guidelines and are subject to change and are dependent to different conditions such as recipes, ingredients, cup size, preferences settings.

# Cappuccinatore with double position for milk pipe

*Allowing milk fridge positioning on either sides*



*Both silicon outlets are included in the machine box*



*Left or right positioning is clearly indicated on the component*

**NEW OUTLET LEFT**



**NEW OUTLET RIGHT**





## Coffee cakes alarm can be turned OFF

*Counter can be disabled or modified*

In Aulika Top HSC coffee cakes alarm can be:

- Modified from 10 to 40 cakes
- Disabled (turns off the alarm)

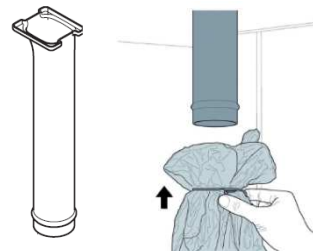
*Please note: while the alarm is disabled, the microswitch for the socket presence is still active, therefore the machine cannot work without the socket installed.*

---



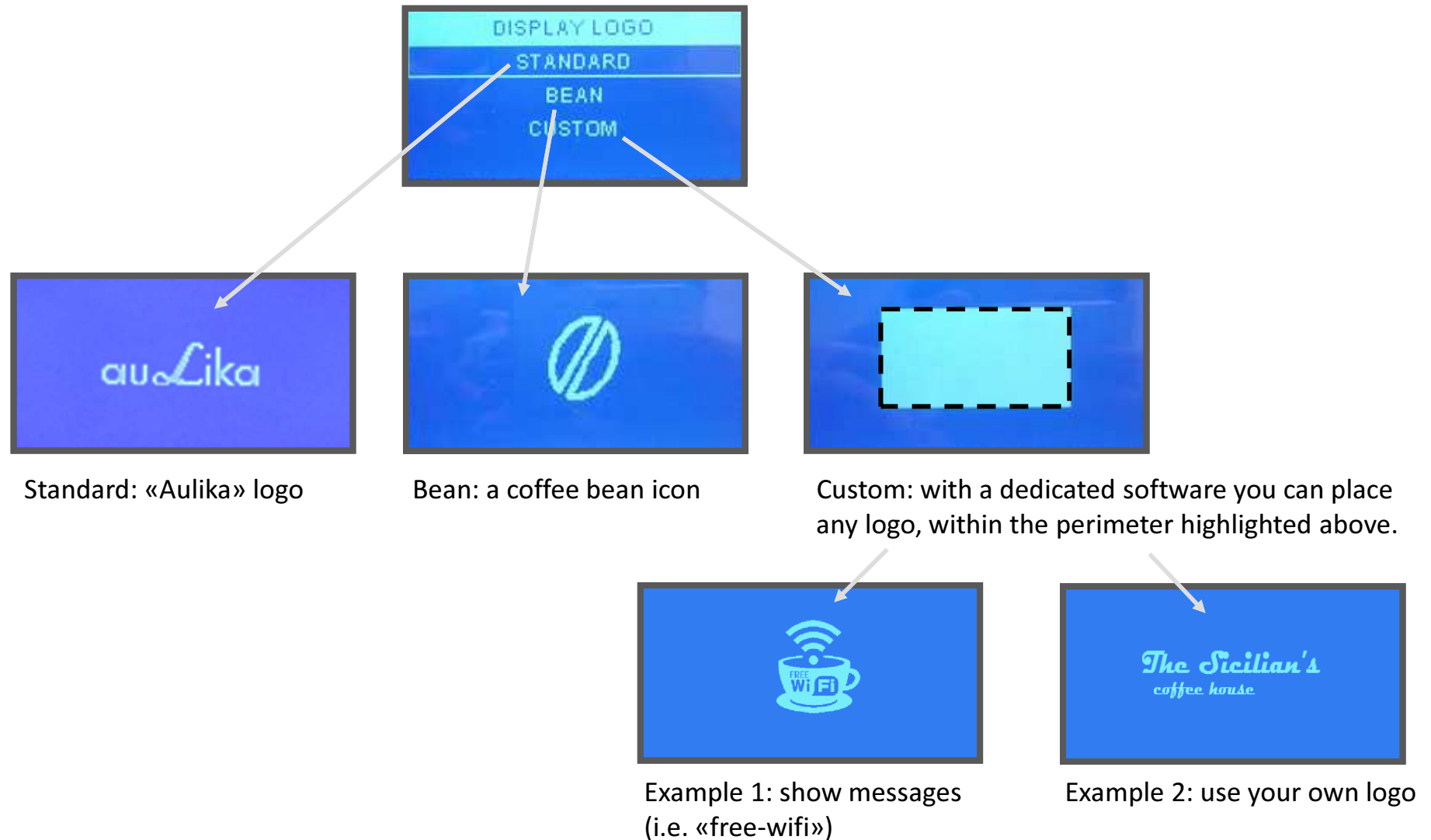
Purely technically speaking, it is possible to discharge cakes directly in the rubbish bag:

- Need a plastic funnel (must check is long/tight enough to prevent end-user's hand reaching the brewing unit)
- Need to disable the microswitch for the socket presence (be sure that this operation is in line with local norms and standards)
- Need to properly fix the machine on the surface of countertop/Cabinet/..



## Customize your machine's logo

*With an alternative bean-shaped icon or with your special design through a dedicated software*



## Payment systems:

### COMPATIBLE SYSTEMS:

1. Stepper coin validator (i.e. Comestero RM5)
2. Decounting systems (i.e. Comestero Apollo)



### CREDIT AVAILABILITY:

- **Backlight** of the buttons turns on when enough credit is inserted, thus communicating availability of the beverage
- **«Insert coin»** message is shown when button is pushed but credit is not available;
- Credit not shown on the display;
- In the default configuration all the beverages are associated with price line = 0, thus all the buttons are backlit by default;
- Double beverages are automatically disabled when payment systems are installed (=when at least one beverage has a price different from 0)



### PRICES:

- Machine allows to set a price line for each beverage:
  - 0 = free beverage
  - 1= price 1
  - 2= price 2
- Each price line must be associated to a money value (i.e. price line 1 = 0,5€) through the payment system
- Prices are not shown on the display

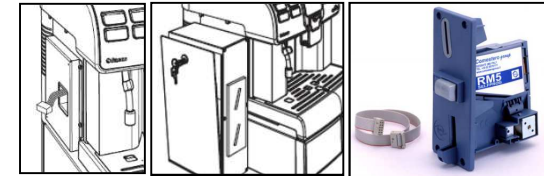
## Stepper coin validator use:

### How it works:

- Coin validators allow beverages to be dispensed only when enough coins are inserted;

### Install and set-up of the coin validator:

- Mount the Saeco Aulika coin box on the machine's side
- Mount the coin validator on the coin box
- Connect the stepper coin validator to the machine
- Set price values of each of the 2 price lines (i.e. price 1 = 0,5€) on the coin validator



### Beverage prices setting:

- Machine allows to set a price line for each beverage:
  - 0 = free beverage
  - 1= price 1
  - 2= price 2



### Example:

- Hot water and steam = price line 0 = free
- Espresso, Coffee and Americano = price line 1 = 0,5€
- Cappuccino, Latte Macchiato, Milk Coffee = price line 2 = 1€

If credit = 0 to 0,49€

= Hot water and steam available



If credit = 0,5 to 0,99€

=Hot water, steam, espresso, coffee, americano available



If credit =>1€

= all beverages available



## Decounting system use:

### How it works:

- Decounting systems allow drinks to be dispensed only after recognising the enabled card
- Aulika is specifically validated for the use with Comestero «Apollo» system



### Install and set-up of Decounting System:

- Remove the plastic panel on Aulika's side
- Connect the Apollo RFID reader to Aulika's cable
- Fix the RFID reader behind Aulika's front panel
- Set-up the RFID reader and cards with the desired credit



### Set-up prices on Aulika:

- Machine allows to set a price line for each beverage:
  - 0 = free beverage
  - 1 = beverage costs 1 credit



### Example:

- Hot water and steam = price line 0 = free
- All other beverages = price line 1 = 1 credit

If credit is not present = Only Hot water and steam available



If credit is present = all beverages available



## Interface/functions: additional info:

- **SPECIAL BEVERAGES:**

long coffee, hot milk, american coffee, steam, milk-coffee.

If credit is available for at least one beverage, the special button backlight will turn on.



- **CLEAN:**

Current «clean» cycle is performed with steam. When payment systems are enabled, the «clean» will be performed with hot water instead of steam. Backlight turns on when, after 10 minutes, the machine asks you to perform the «clean» cycle. Backlight turns on while the machine is performing the «clean» cycle.



- **ICONS:**

Silver painted buttons, laser paint removal for the icon.

OK, ESC, ▼, ▲ characters pad printed in black on the buttons (same as today). Backlight colour: white



## Coin box

- Powder painted black (same as Aulika Top's body/rear)
- One front panel with cut-out for coin validator
- Key to lock the side panel (different from the other 2 Aulika keys)
- Internal coin collector, in metal
- mounting instructions included in the box, no price stickers included



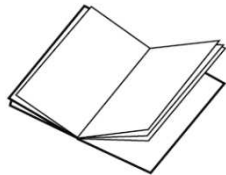
## Summary of components differences vs standard Aulika Top

- Buttons (different colour, translucent area for backlight)
- CPU board: added led lights for all buttons
- Boilers: 1300W with larger pipe (Aulika Top standard: 5,00 mm $\varnothing$ , Aulika Top HSC: 6,25 mm $\varnothing$ )
- Cappuccinatore with 2 pipe positions (left and right – 2 different items, one mounted, one in the box)
- Dedicated software (not compatible with Aulika Top standard)



## Accessories included in the machine:

**Instruction manual**

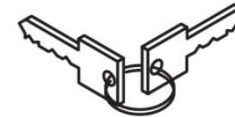


**Plug**



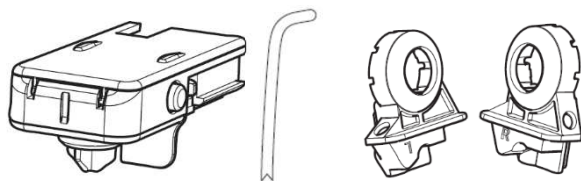
**2 keys**

For brewer door and canisters



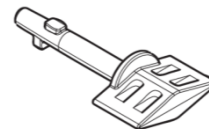
**Cappuccinatore**

Including pipe and left and right outlets



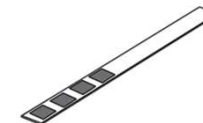
**Technician key**

To exclude door microswitch



**Water hardness tester**

1 piece



## Water filtration accessories

### For tank version:

**Brita intenza filter**  
box of 36 pcs; 21002301



**Brita Aqua Gusto 100CU**  
60 x pcs; 21002392



**Brita Aqua Gusto 250CU**  
60 x pcs; 21002393



### For plumbed version:

**Brita Head**  
12001289



**Brita C300**  
12001286



**Brita C150**  
12001287



**Brita C50**  
Available upon request



**Brita C25**  
Available upon request



## Other accessories

### Additional cappuccinatore

Includes pipe and left and right outlet  
421946032811



### Milk cooler

Peltier system, 2 litres  
21001820



### Astra

5 l compressor  
21001800



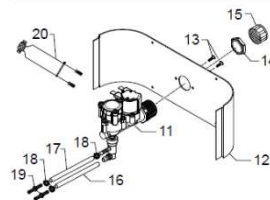
### Coin Box

black painted, with key and internal coin collector  
21002350



### Water connection Kit

To upgrade tank version to water connection mode  
20007241



## Maintenance & Service

### Descaling solution (500 ml)

1 piece; 21002351  
MOQ 10 pcs



### Descaling solution (5 litres)

1 piece;  
21001901



### Coffee clean tablets:

2 boxes of 12 pcs; every piece includes  
10 tablets; 21001883



### Milk circuit cleaning powder

box of 12 pcs;  
21002061



### Service Kit 12 units

Grease, o-ring gaskets, brush  
21001031



### Maintenance kit

2x descaler, 2x water filter, 1x oil remover (10  
tablets), 2x gaskets, 1 x grease, 1x brush;  
21002059



### Cleaning brush

1 piece;  
127390100



### Lubricating grease

1 piece;  
11005044



### Water hardness tester

1 piece;  
0301.961



## Service: SerKit

Kit to update machine's software. Includes the cables for all Saeco OCS machines.  
SKU for purchasing: 20000490



**THANK YOU!**